



Fairlight Audiobase3
Audiobase3 Win7 Installation Manual
23 July 2012
Version 1

INTRODUCTION.....	3
This Document.....	3
Description	3
PC CONFIGURATION AND SPECIFICATIONS:.....	4
AUDIOBASE PRE-INSTALLATION CHECKLIST	5
AUDIOBASE3 SOFTWARE INSTALLATION.....	6
Required Files:	6
Installation Procedure:.....	6
1 - Install iTunes.....	6
1a – Configure iTunes	7
1b – Configure iTunes Component Services	9
2 - Install Apache2 Server.....	15
3 - Install MySQL.....	17
3a – Configure MySQL Server.....	19
3b – Install MySQL GUI Tools.....	21
4 – Install Audiobase3	22
5 - Installing Zend Optimizer (NOT Required for Audiobase 3.5.8 or newer “NoZend” versions.....	26
6 – Run the MySQL Configuration Scripts.....	29
CONFIGURING DREAM II/XYNERGI	32
Audiobase drive mapping	32
Preparing the Audiobase drive for first use	33
Configuring the DreamII/Xynergi Audiobase settings	34
For Dream II/Xynergi systems V3.2 and earlier	34
For Dream II/Xynergi systems V4.0 and beyond.....	35
Accessing the AudioBase3 Web Interface	36
TESTING/TROUBLESHOOTING	37
Initial troubleshooting steps	37
Common Problems:	38
Technical Assistance	39

Introduction

This Document

This document describes the process of installation of AudioBase3 3.5.7 or better on a Windows7 64-bit SP1 Host PC. For Windows XP 32bit SP3 based installations, contact support@fairlightau.com

Description

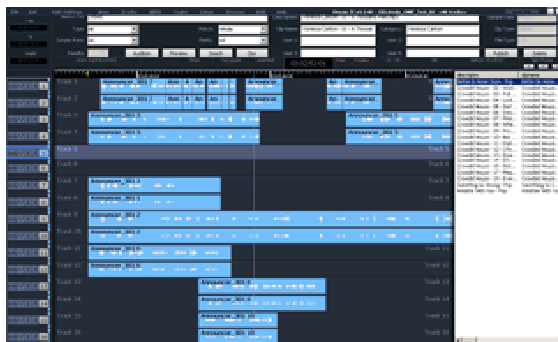
AudioBase3 features a completely new engine. This engine can be used with MySQL databases and Apache2 webserver.

AudioBase3 integrates with Apple's iTunes, which provides a robust mechanism for ripping and publishing library CDs directly to AudioBase3. It also supports direct scanning and publishing of compatible WAV, AIFF and MP3 files, including metadata extraction.

While AudioBase3 includes an installer, several external components are required. Therefore, please make sure ALL installation steps have been completed correctly before attempting to use AudioBase3!

Apache2 and MySQL is the only supported configuration for AudioBase3. Other webserver/database combinations are not supported. Your operating system must be Windows7 Professional 64bit.

Dream II systems should be running version 3.1.59 or above.



PC Configuration and Specifications:

Audiobase as an application is not a particularly large or processing-intensive application. As such, a relatively modest PC with current CPU and RAM compliment should be fine. Audiobase is not designed or expected to have to play-back HD video, and therefore does not require a significantly large graphics card.

In order to hold the potentially large Sound Effects, Music, and Foley libraries some studios may have to handle, a large-capacity media harddrive, physically independent of the Windows System drive, is recommended. For those studios who deem it necessary, the Media drive array may be configured as a RAID array, with the RAID mode chosen to provide a suitable balance between data-protection and sheer-speed performance.

Note: Some facilities have requested the ability to store the Audiobase libraries on a network-shared drive. This is technically possible, but requires significant additional installation steps, and a high degree of I.T. competence to correctly configure. Using a dedicated local harddrive within the Audiobase server machine is much easier for the average End User to install. The following procedure assumes the Audiobase machine is equipped with its own internal Media Harddrive.

To facilitate addition of files from optical media such as DVD-Data disks, and ripping of audio CD content, a suitable CD/DVD drive is recommended.

As it is envisaged that the Audiobase "server" machine will be accessed via a studio-wide Ethernet network, obviously a machine with Gigabit LAN ports is preferable. The architecture of the studio network itself will also play a part in the performance of the Audiobase service. Therefore, it is highly recommended that the host network be configured for Gigabit-speed operation.

The following is just one example of a cost-effect, workhorse Audiobase server configuration.

Tested Configuration : HP Z400 Workstation

Processor : Intel Core i7 W3520 2.67 GHz (Quad core)

BIOS : HP version 3.54 date 21/11/2011

Memory : 3 GB DDR3 RAM

Software : Audiobase3 version 3.5.9

Operating System : Microsoft Windows 7 Professional 64bit SP1

Installed Expansion card

PCI slot #	Slot Type	Card Installed
1	- PCIe 8/4	
2	- PCIe 16	NVidia Q600 (NVidia driver 275.36)
3	- PCIe 8/4	
4	- PCIe16	
5	- PCI	
6	- PCI	

Installed Harddrive Array

Drive Bay #	Size	Internal/External	Drive	Connected to...
1	5 ¼"	External	HP CD/DVD	SATA 4
2	5 ¼"	External	Seagate 7200.12 1TB	SATA 1
3	5 ¼"	External		SATA 2
4	3 ½"	Internal		SATA 3
5	3 ½"	Internal	250Gb SATA (HP supply)	SATA 0

Harddrive Notes:

- 1 X Seagate 7200.12 7200rpm 32Mb Cache NCQ drive for Audiobase Library
- Additional Media drives may be added to gain more capacity, and/or RAIDed together for additional data protection

Audiobase Pre-Installation Checklist

- Windows7 Professional 64bit + SP1 installed
- all Microsoft "Critical Updates" applied
(Do NOT install any "Optional" or "Hardware" updates,
or any Critical Updates which are NOT automatically selected!)
- An Administrator-Level profile is available for setup and operation of Audiobase
- User Access Control (U.A.C.) is disabled
- Media Harddrive is installed and configured
- Windows Computer Name is _confirmed_ and _known_
(Example installation procedure below uses the Computer Name "Audiobase-Server")
- IP address of the Audiobase machine is _confirmed_ and _known_
(It is recommended to configure the Audiobase machine with a static IP address).
- Administrator-Level Username and Password is _confirmed_ and _known_
(Example installation procedure below uses
Username : *AB3Username*
password : *ab3password*)
- Local drive letter for Media harddrive is _confirmed_ and _known_
(Example installation procedure below uses drive letter "L" for "Library")
- Windows is configured to Auto-Logon to the Administrator-Level account on start-up
- "File and Printer Sharing" is _enabled_ in Windows Firewall
- Power-Handling is set to "High Performance", and all "sleep"/"hibernate"/"idle" functions have been disabled
- Manually create the following folders on the root of the Media Harddrive L:\
 - WAV1
 - WAV2
 - ML4
 - iTunes

Audiobase3 Software Installation

Required Files:

- iTunes64Setup.exe (recommend version 10.4 for 64-bit O/S or better)
- Apache_2.0.63-win32-x86-no_ssl.msi
- Mysql-essential-5.0.51b-win32.msi
- Mysql-gui-tools-5.0-r17-win32.msi
- SetupAB3-0065-3.5.7.exe or newer
- ZendOptimizer-3.3.0a-Windows-i386.exe
(*Not Required for 3.5.8 or newer "NoZend" versions*)

Installation Procedure:

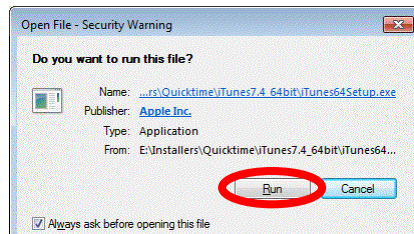
*** Please temporarily disable all Firewalls and Security Programs during the installation ***

1 - Install iTunes

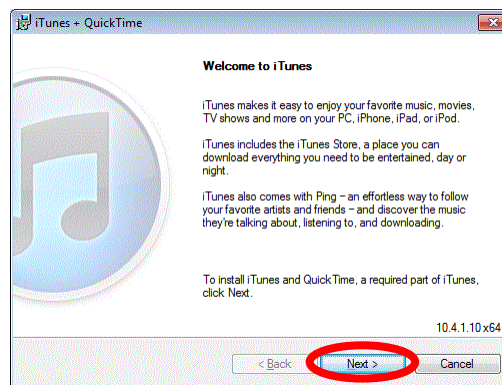
Double click on < iTunes64Setup.exe > ,

You may be prompted "Do you want to run this file?"

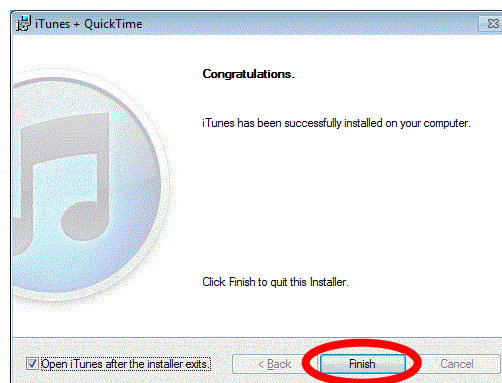
If so, click "Run"



Follow all prompts for a "default" installation.

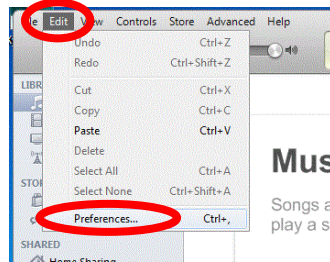


Once the installation is completed, click "Finish"

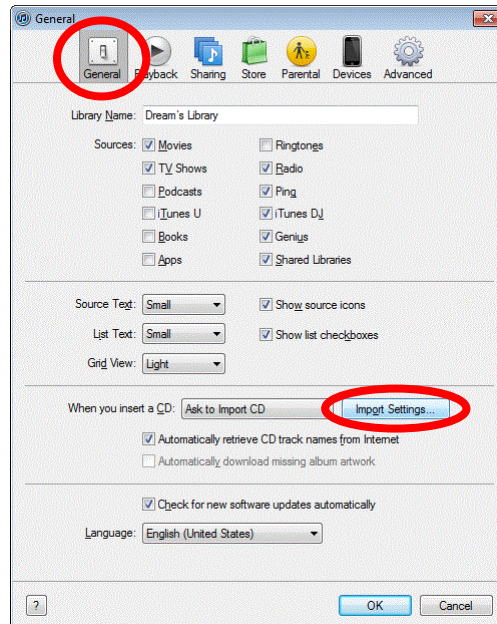


1a – Configure iTunes

Open iTunes, and select “Edit -> Preferences”.

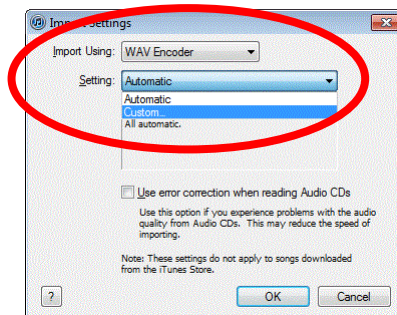


On the “Preferences” pop-up, click the “General” tab, and click the “Import Settings” button

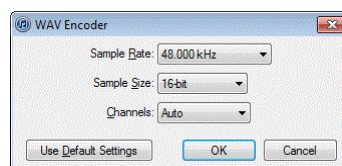


Select ‘Import Using : WAV Encoder’

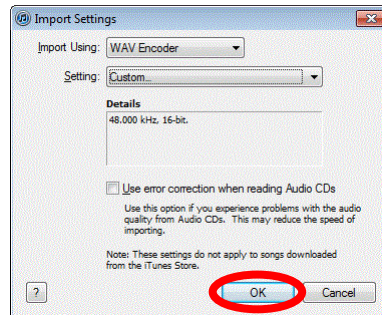
Select ‘Setting : Custom’



On the “WAV Encoder” pop-up, modify sample rate, bit depth, and channel count as shown below. Click “OK” to accept the WAV Encoder changes.

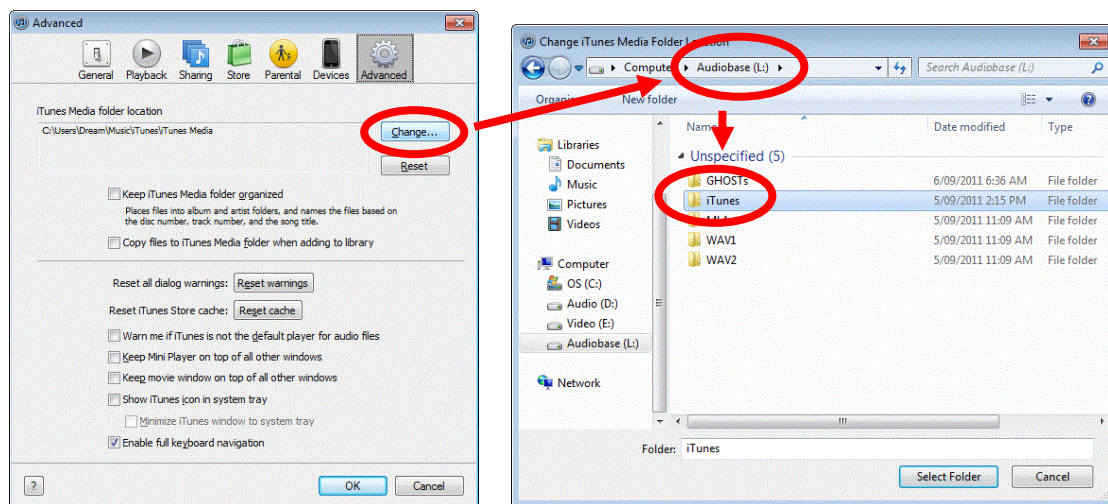


Click "OK" to accept the Import Settings changes.

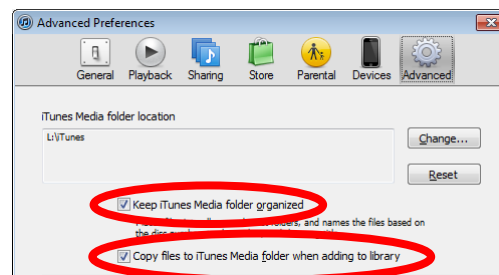


Select the "Advanced Tab"

Change the iTunes music folder location to the Audiobase Media Harddrive (eg L:\iTunes).



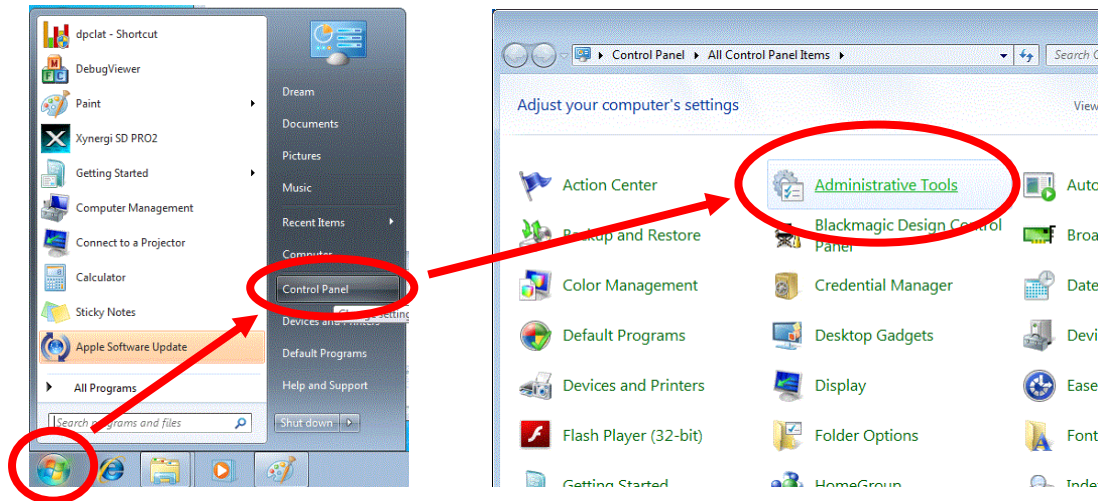
Make sure 'Keep iTunes Music folder organized' and 'Copy files to iTunes Media folder when adding to library' is checked.



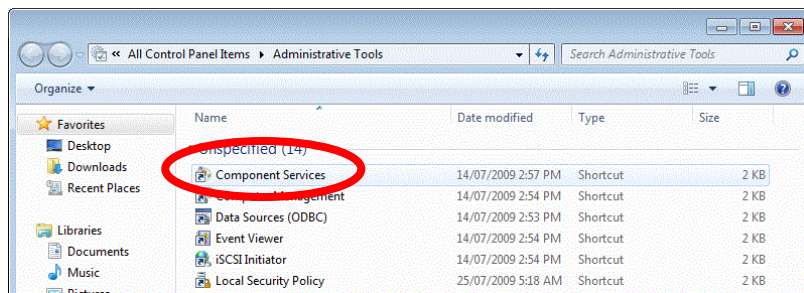
Click "OK" to exit the "Advanced Preferences" window, and close iTunes

1b – Configure iTunes Component Services

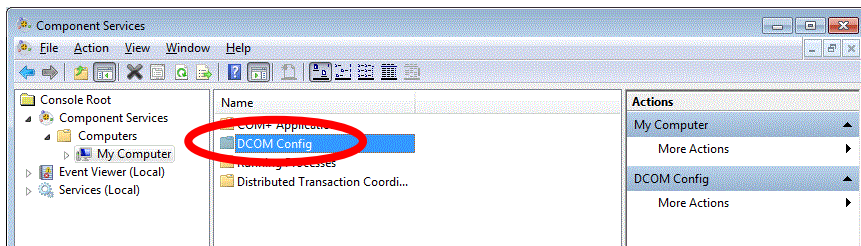
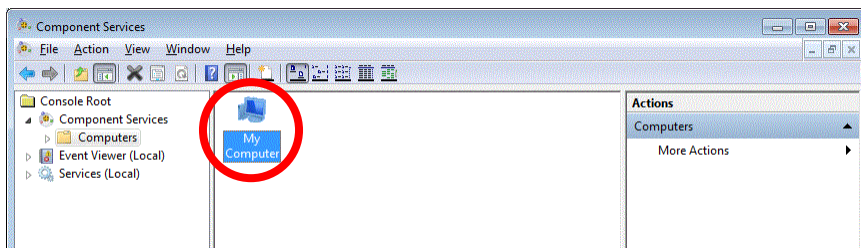
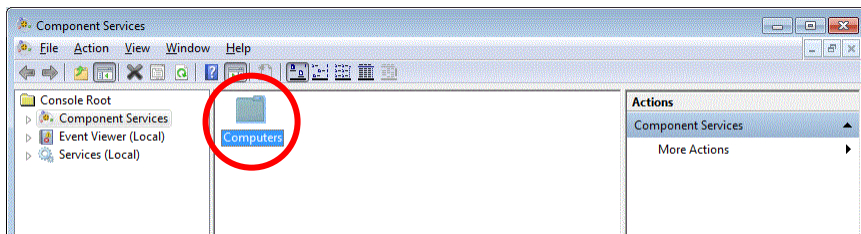
Open 'START -> Control Panel -> Administrative Tools.

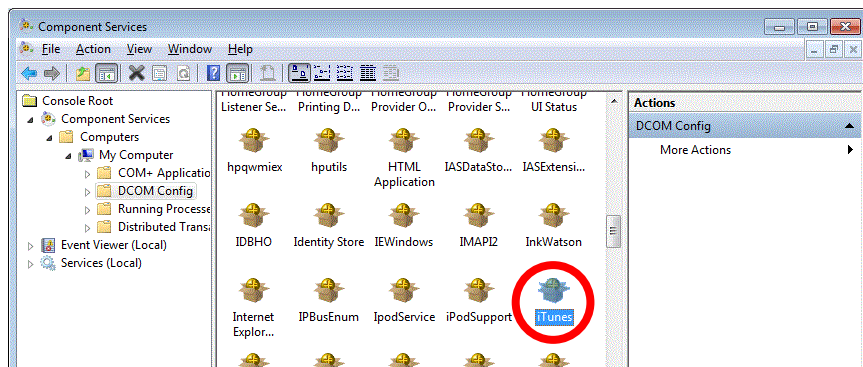


Double-click 'Component Services'

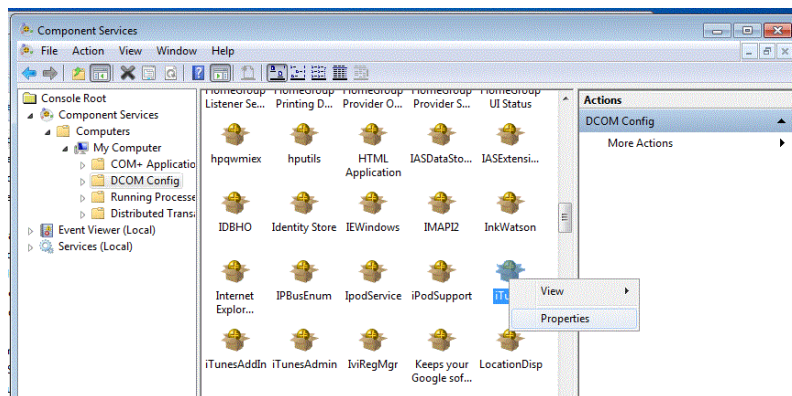


Select 'Computers -> My Computer -> DCOM Config -> iTunes'.

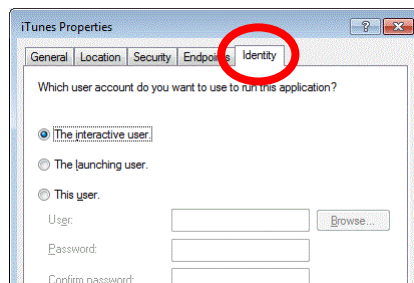




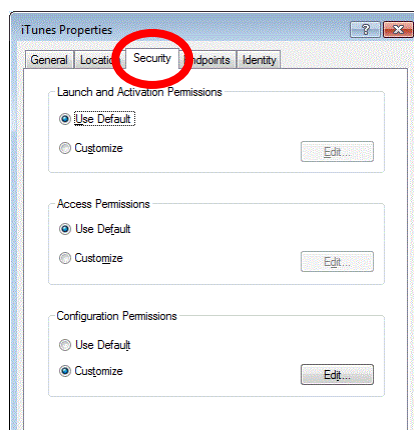
Right-click on 'iTunes', and select 'Properties'



Click on the "Identity" tab, and select "the interactive user".

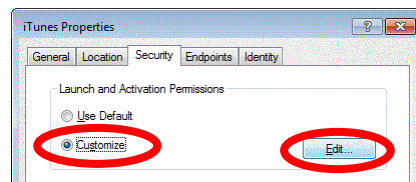


Select 'Security' tab.

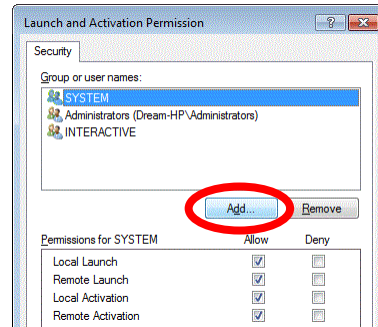


Under 'Launch and Activation Permissions', select 'Customize'.

Click 'Edit'.

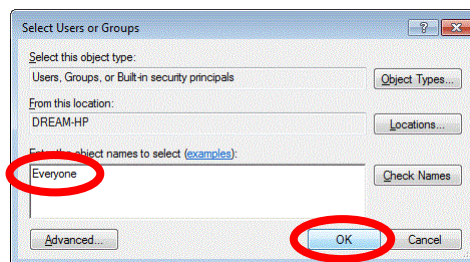


Click 'Add'.



In the "Enter the object names to select" field, enter 'Everyone'.

Click 'Ok'.

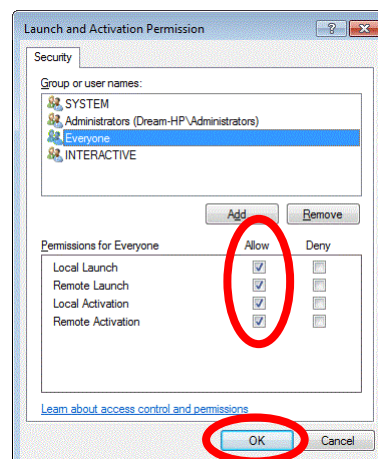


With 'Everyone' selected,

Check 'Allow' next to

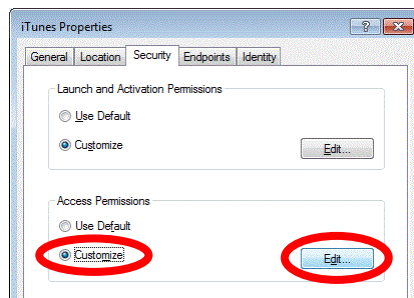
- 'Local Launch',
- 'Remote Launch',
- 'Local Activation'
- 'Remote Activation'.

Click 'Ok'.

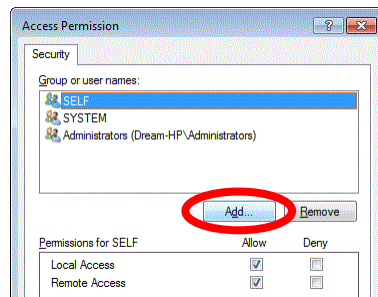


Under 'Access Permissions', select 'Customize'.

Click 'Edit'.

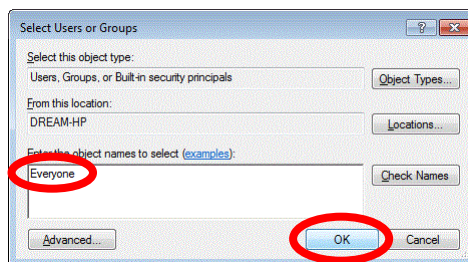


Click 'Add'



In the "Enter the object names to select" field, enter 'Everyone'.

Click 'Ok'.

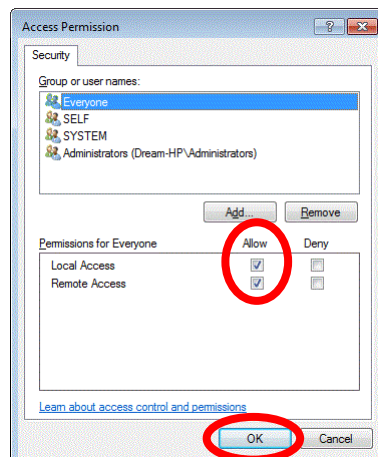


With 'Everyone' selected,

check 'Allow' next to

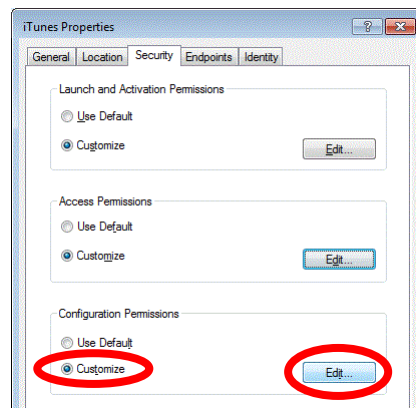
- 'Local Access'
- 'Remote Access'.

Click 'Ok'.

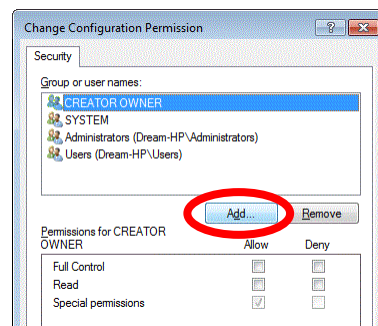


Under 'Configuration Permissions', select 'Customize'.

Click 'Edit'.

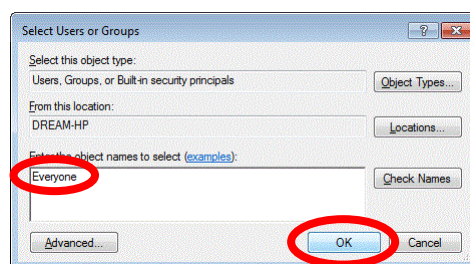


Click 'Add'



In the "Enter the object names to select" field, enter 'Everyone'.

Click 'Ok'.



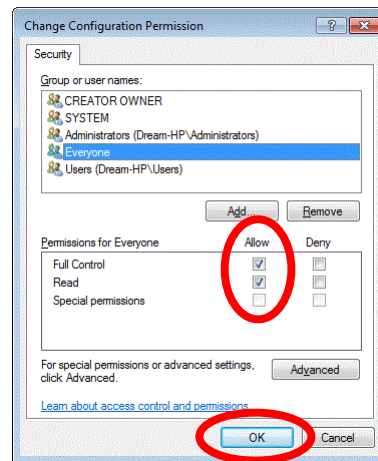
With 'Everyone' selected,

check 'Allow' next to

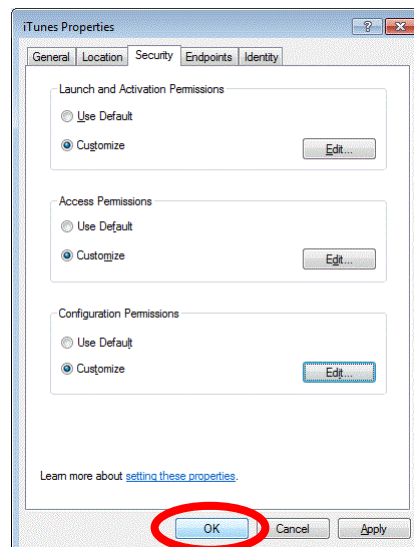
- 'Full Control'
- 'Read'.

Leave 'Special Permissions' at its default state.

Click 'Ok'.



Click "OK" to close "iTunes Properties".



Please be aware that the Server must be connected to the Internet for iTunes to work.

2 - Install Apache2 Server

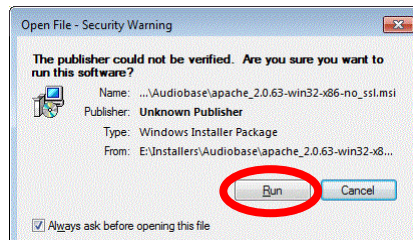
This is a freely-available source code implementation of an HTTP (Web) server used by AB3. **

Note: AB3 is not yet compatible with Apache 2.2, so **make sure to download the latest release of Apache 2.0** at <http://httpd.apache.org/download.cgi>.

Double-click on `<apache_2.0.63-win32-x86-no_ssl.msi>`, follow all prompts for a “default” installation.

You may be prompted “Do you want to run this file”?

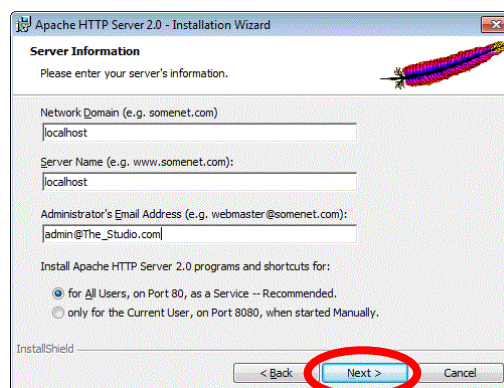
If so, click “Run”



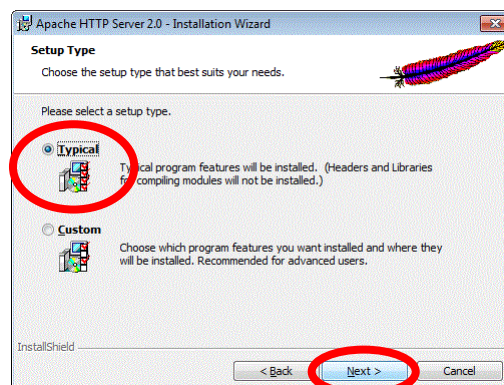
When prompted,

- Enter “localhost” for domain name and server name.
- Enter your “admin” email address.

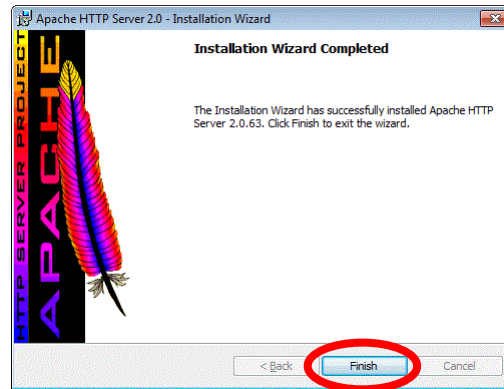
Then click “Next”



When prompted, select “Typical” setup type, and click “Next”



When prompted, click "Finish" to complete the Apache Installation.



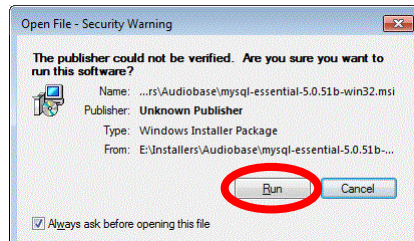
3 - Install MySQL

Install MySQL as follows:

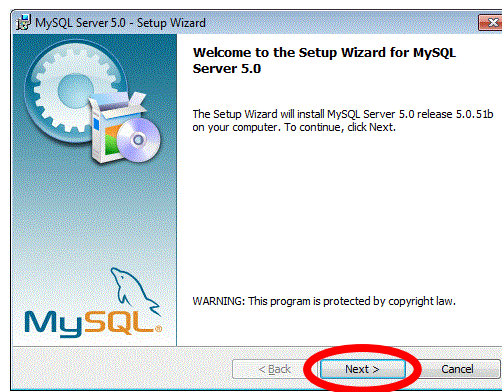
Launch `<mysql-essential-5.0.51b-win32.msi>`

You may be prompted "Do you want to run this file?"

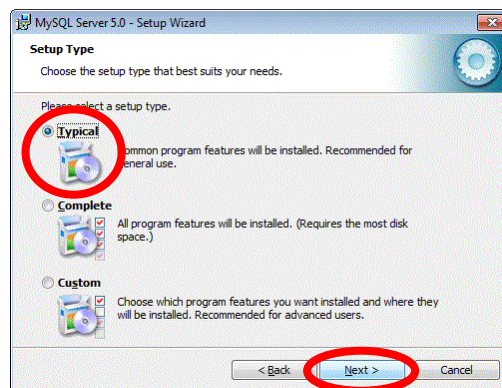
If so, click "Run"



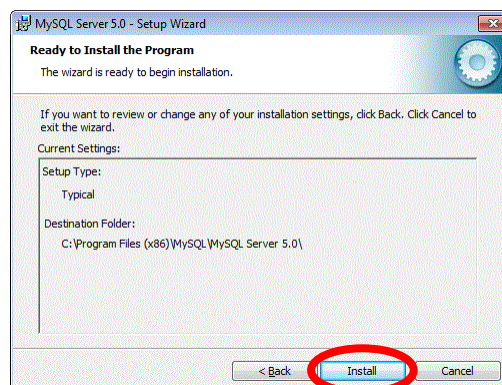
Click 'Next'

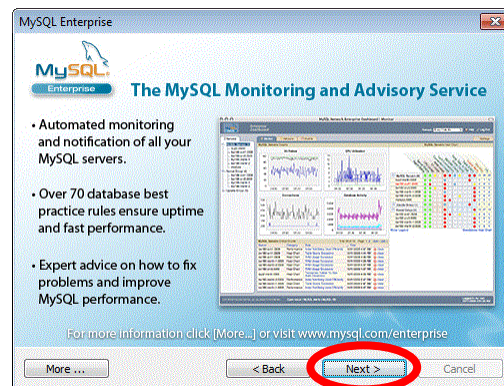
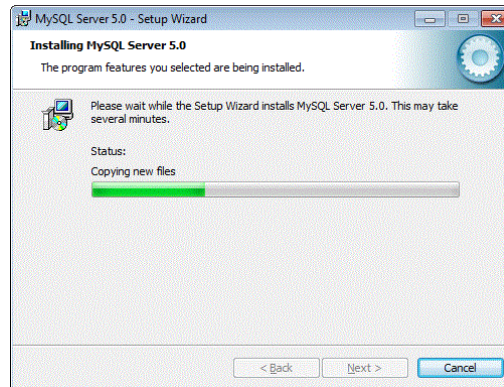


Select 'Typical' setup type, and click 'Next'

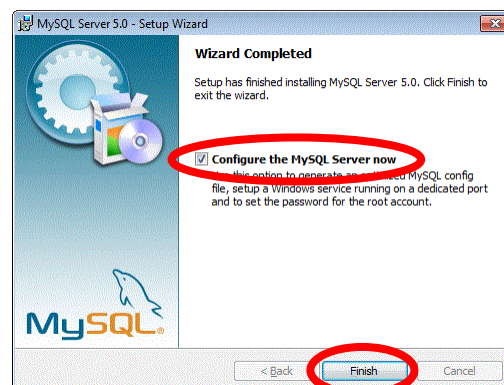


Click 'Install'.



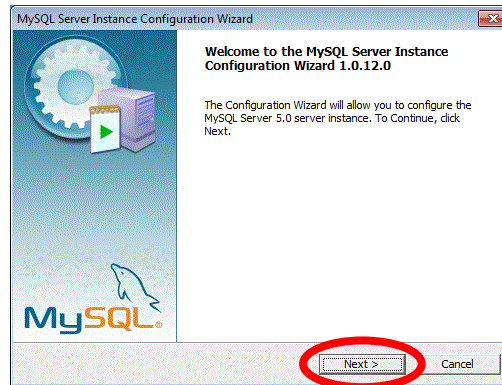


Leave 'Configure MySQL Server now' checked, and click 'Finish'

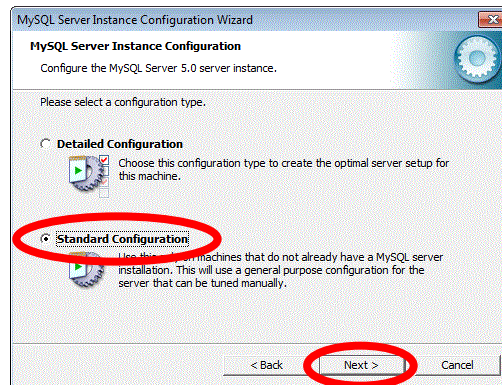


3a – Configure MySQL Server

Click 'Next' in the configuration Wizard.

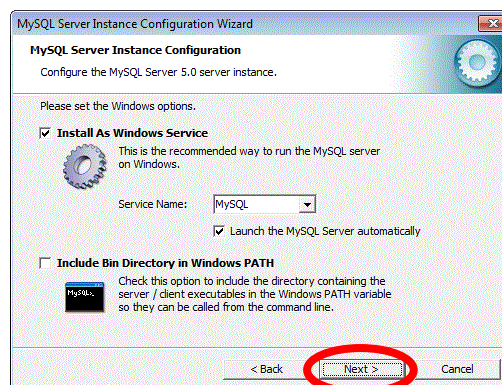


Select 'Standard Configuration' and click 'Next'.



Leave 'Install as Windows Service' and 'Launch the MySQL Server automatically' checked.

Click 'Next'.



Enter a root password.

Note: USE A STRONG PASSWORD

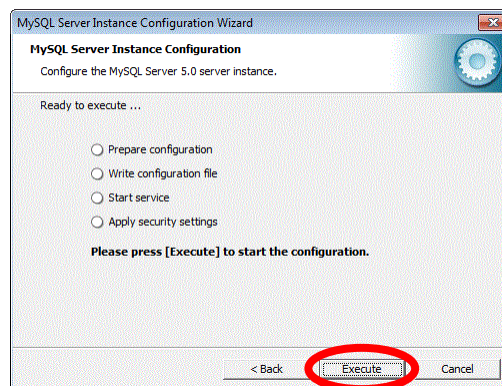
(a combination of letters and numbers at least 8 characters long).

Make sure to **WRITE YOUR PASSWORD DOWN, and STORE IT WHERE YOU CAN FIND IT LATER!!**

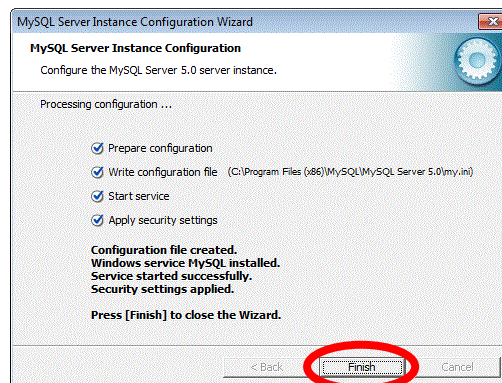
Click 'Next'.



Click 'Execute'



Click 'Finish'

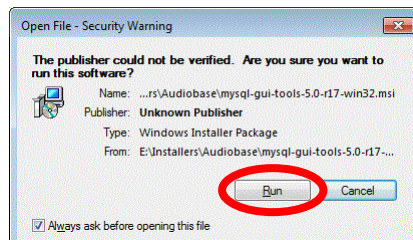


3b – Install MySQL GUI Tools

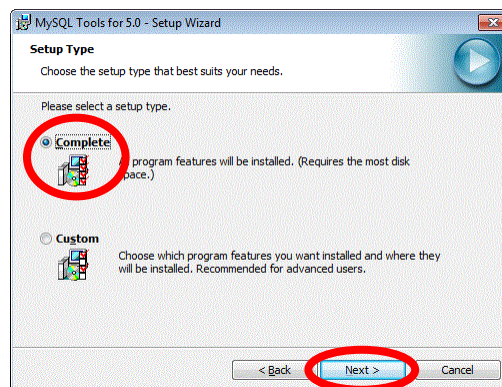
Install `<mysql-gui-tools-5.0-r17-win32.msi>` with the **default options**.

You may be prompted “Do you want to run this file”?

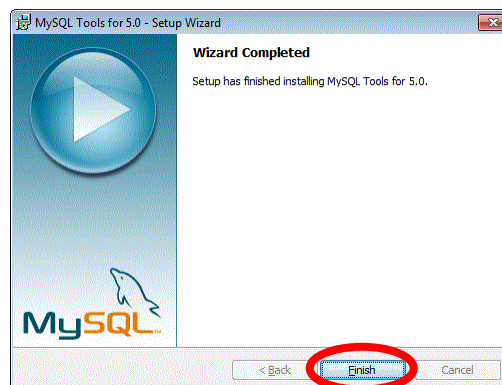
If so, click “Run”



When prompted, select “Complete”, and click “Next”



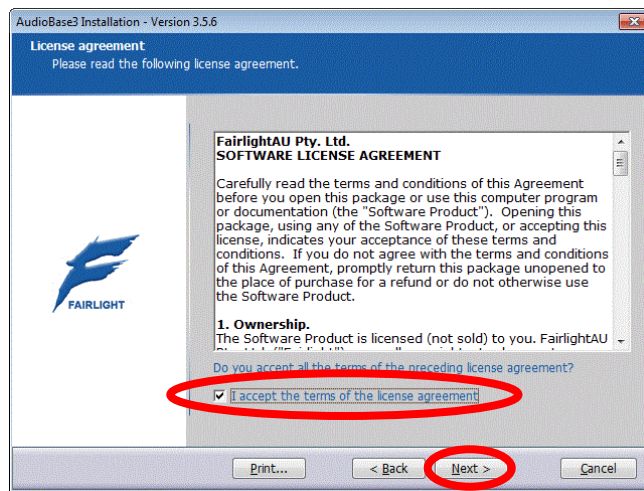
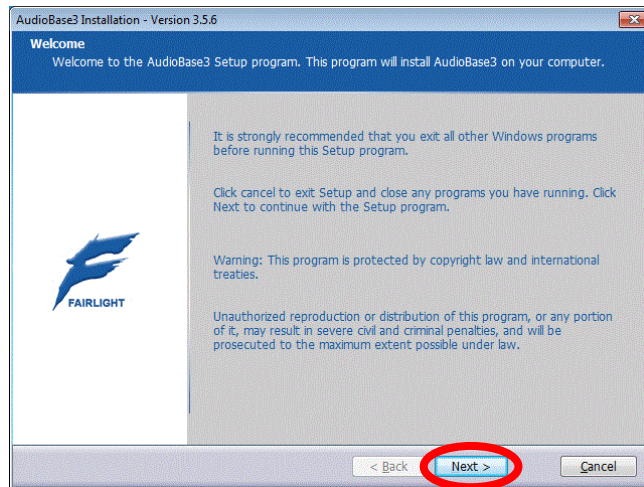
When prompted, click “Finish” to complete the MySQL GUI Tools installation.



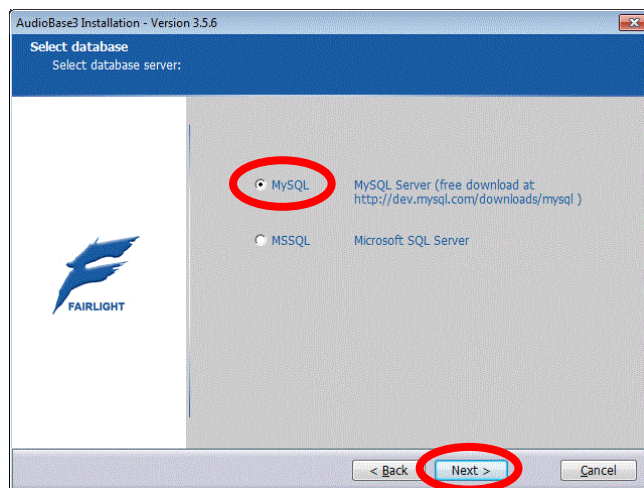
4 – Install Audiobase3

Install AudioBase3

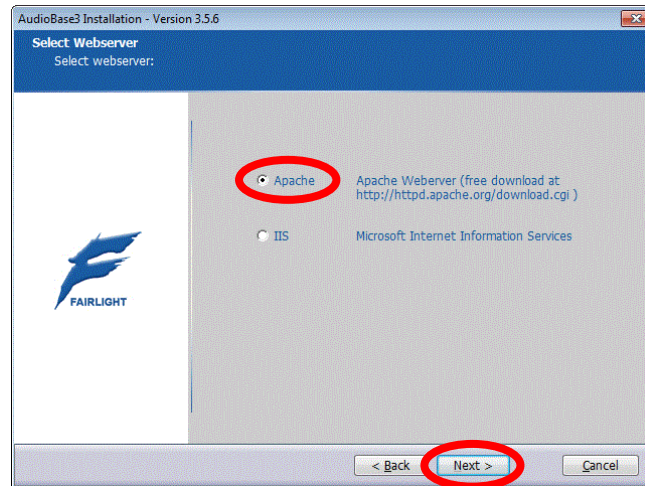
Launch <SetupAB3-006x-3.5.x.exe>



Select Database - Choose MySQL.



Select Webserver - Choose Apache

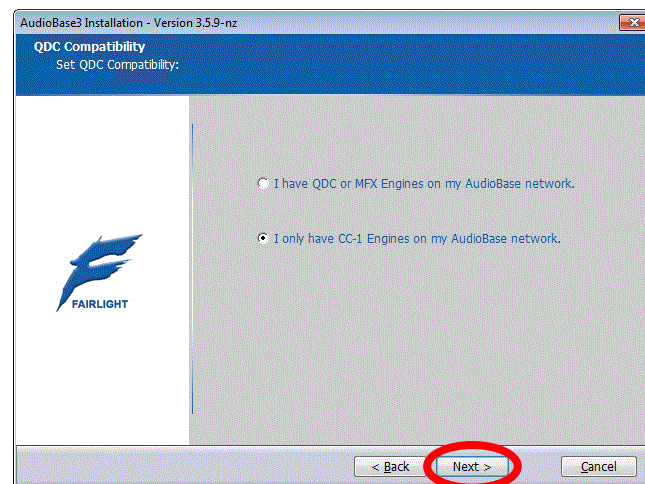


QDC Compatibility

– If the AudioBase3 installation must support older QDC engines, choose “I have QDC or MFX Engines on my AudioBase network” (restricts filename characters and length to maintain QDC compatibility, disables MP3 compatibility)

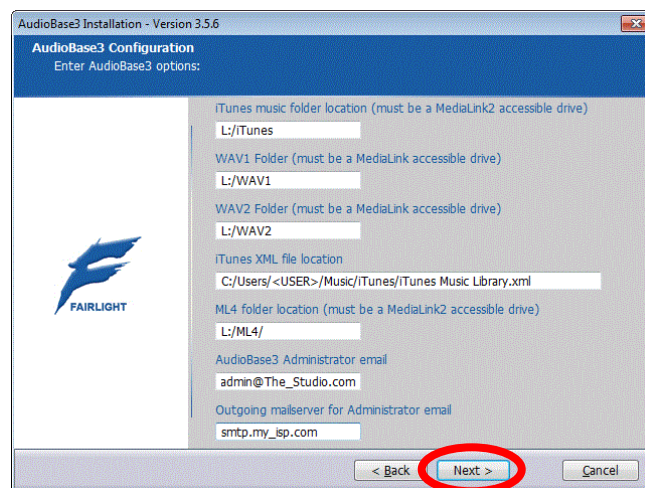
- Otherwise, choose

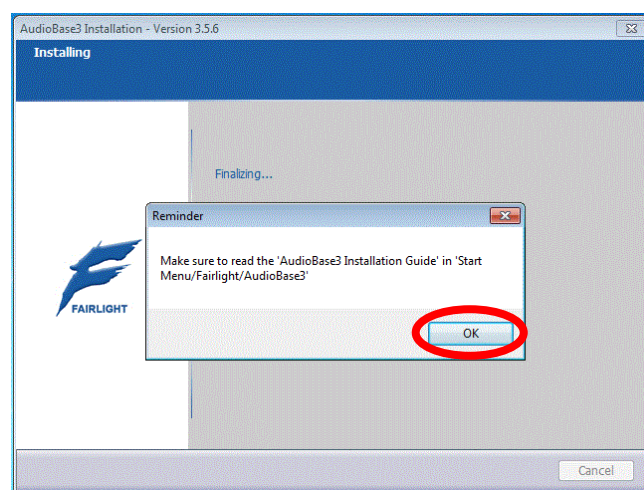
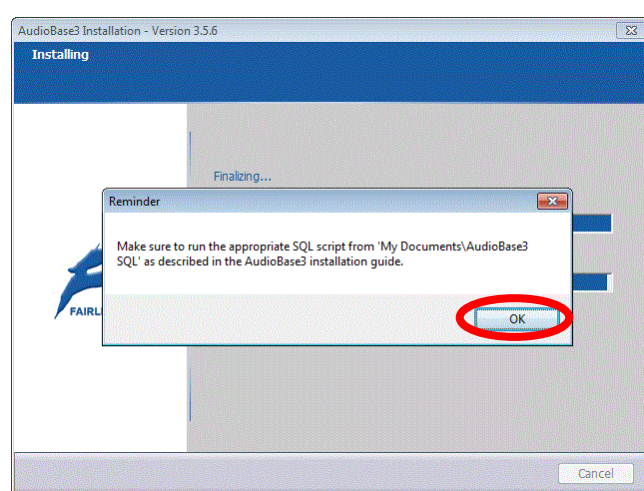
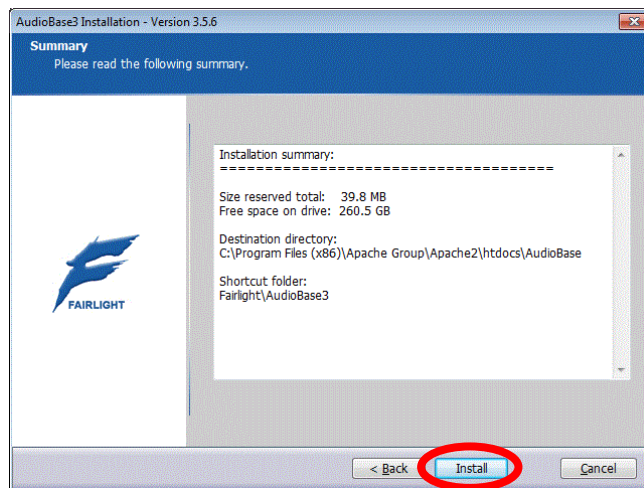
“I only have CC-1 Engines on my AudioBase Network”

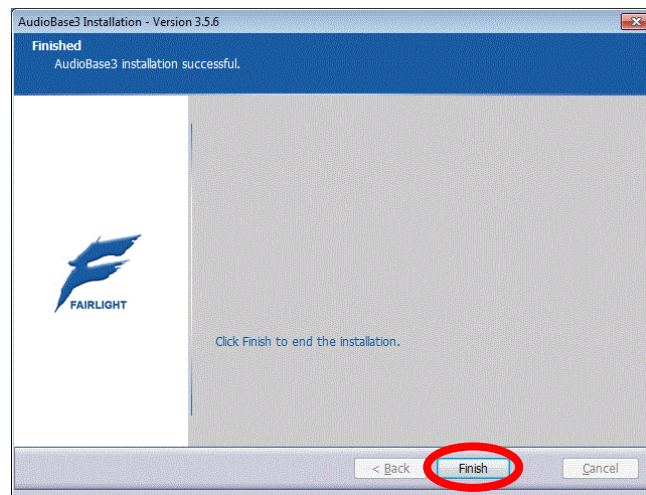


Enter AudioBase3 Options as required (Always use a forward slash /)

In the example below, the AudioBase Media drive is Local drive L:/







5 - Installing Zend Optimizer

(NOT Required for Audiobase 3.5.8 or newer "NoZend" versions.

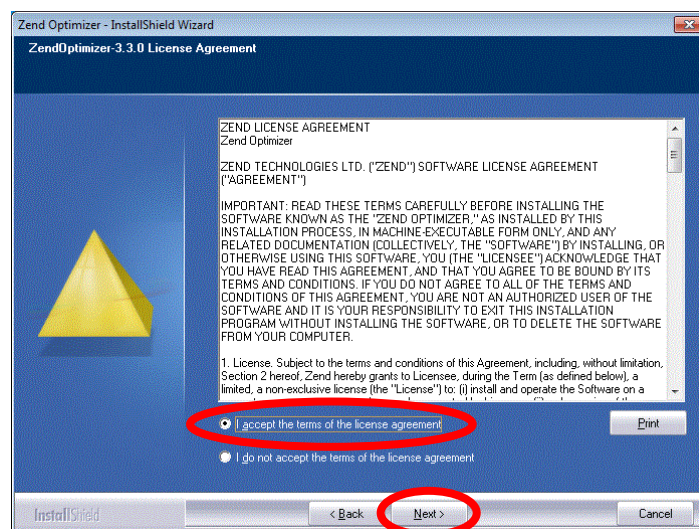
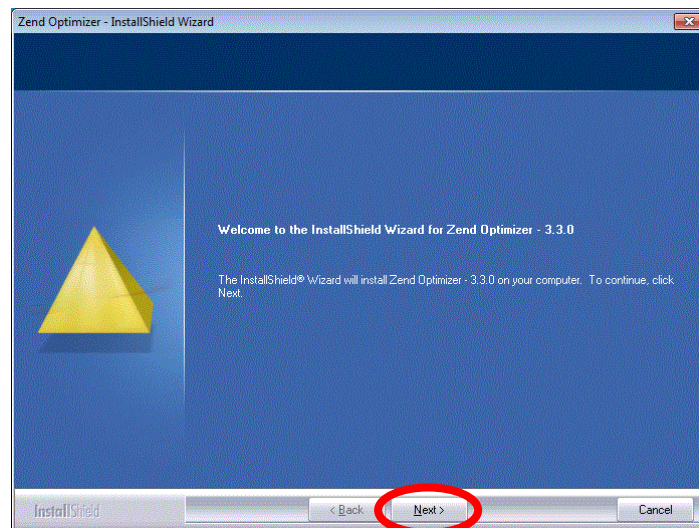
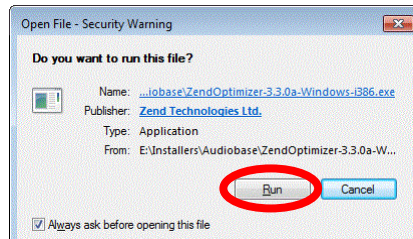
Go to Step 6)

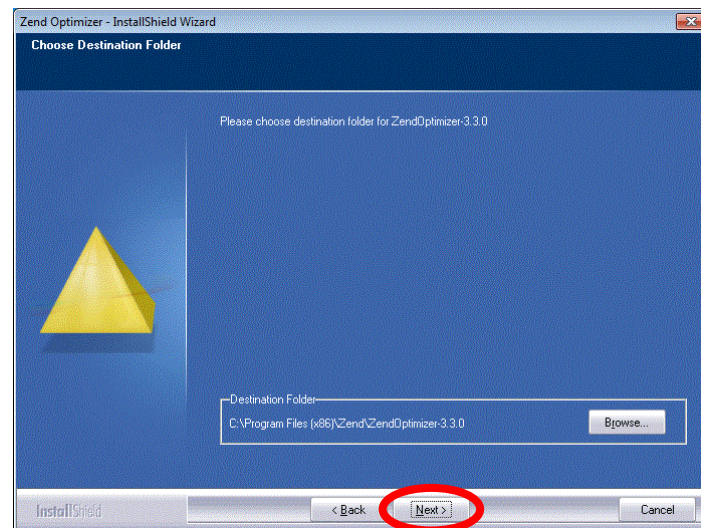
Zend optimizer is required to run compiled PHP binaries.

Launch the Zend Optimizer Installer <ZendOptimizer-3.3.0a-Windows-i386.exe>

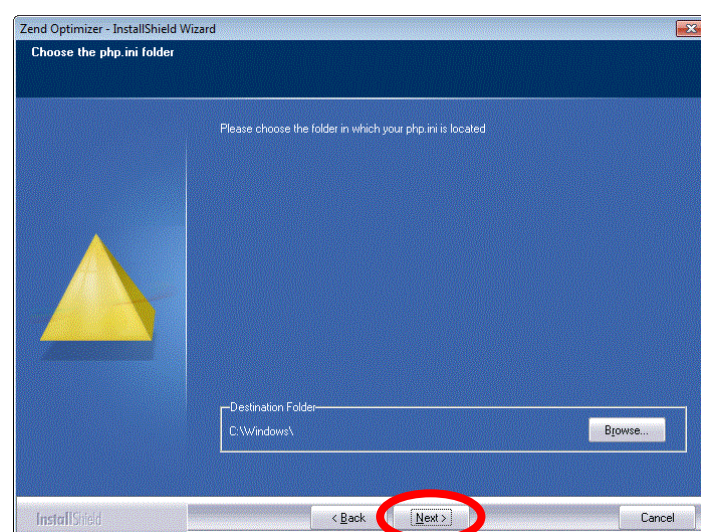
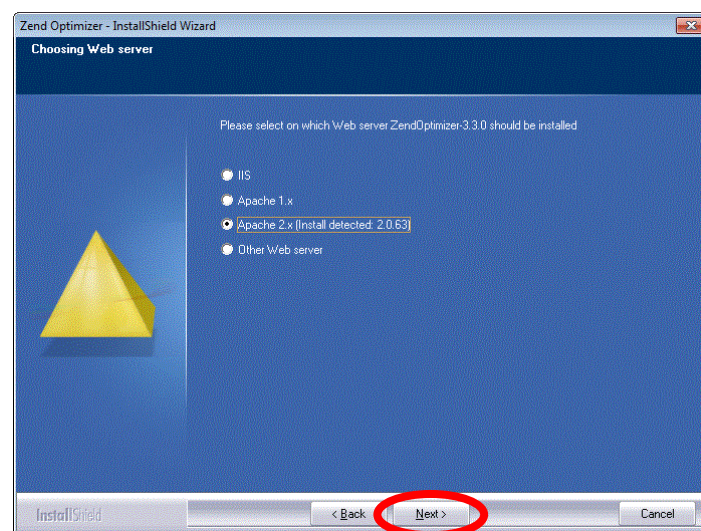
You may be prompted "Do you want to run this file"?

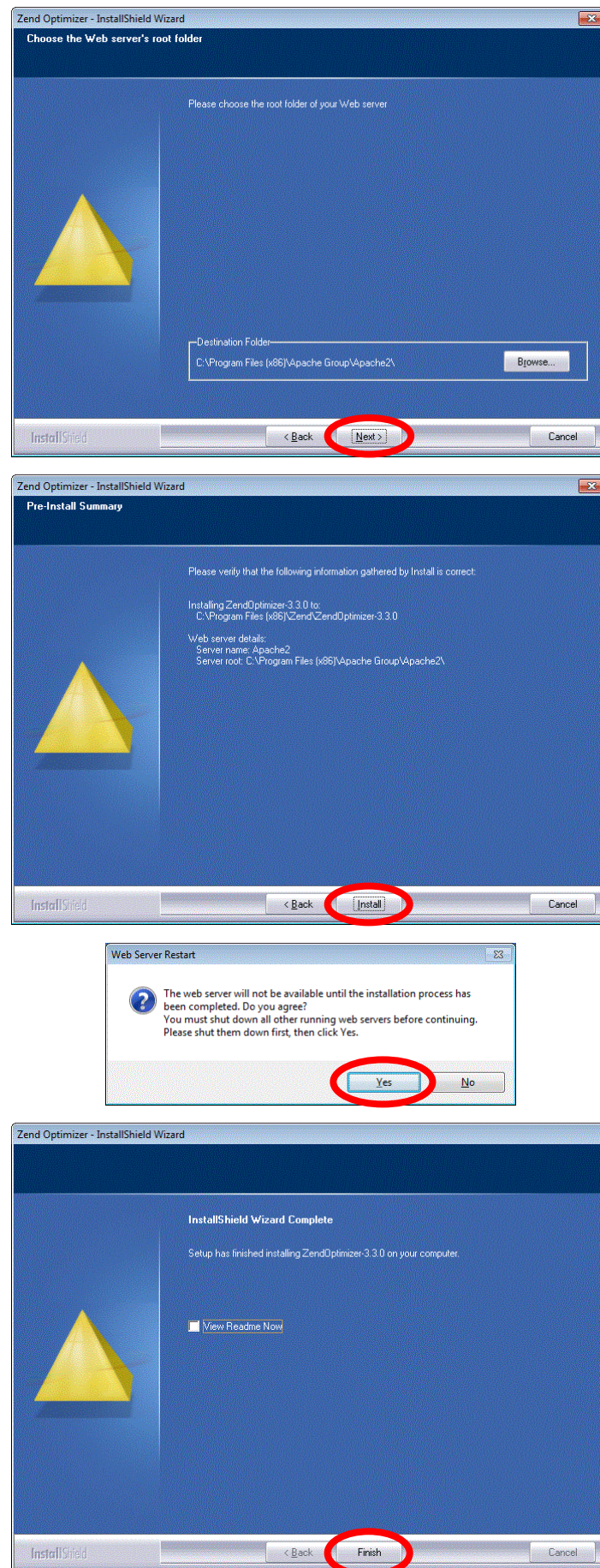
If so, click "Run"





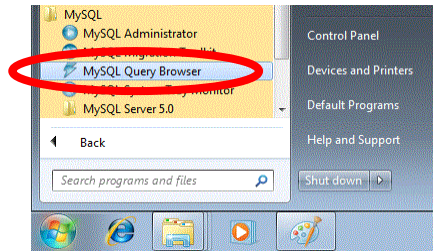
Select the desired webserver, Apache should be automatically detected and selected by default.





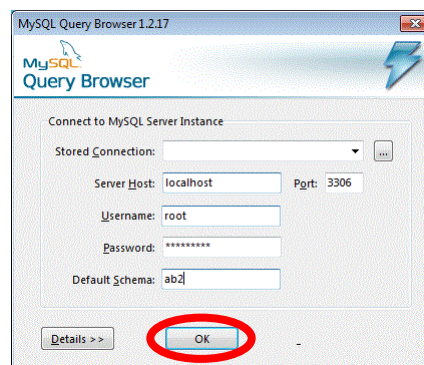
6 – Run the MySQL Configuration Scripts

Open 'Start->Programs->MySQL->MySQL Query Browser'.

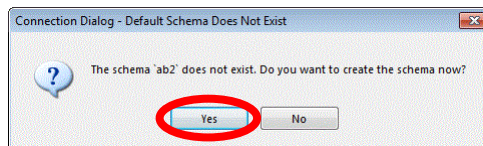


Enter the login information as shown below, including the MySQL root password noted earlier.

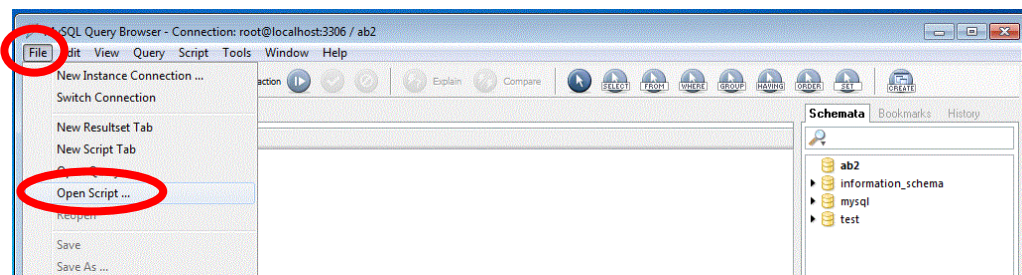
Click "OK" to LogIn



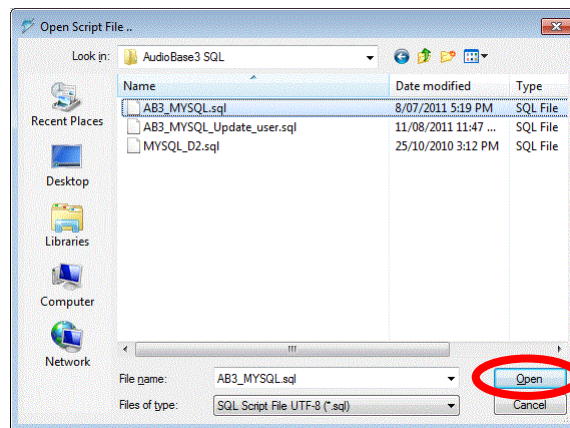
If prompted to create a new schema, click "Yes"



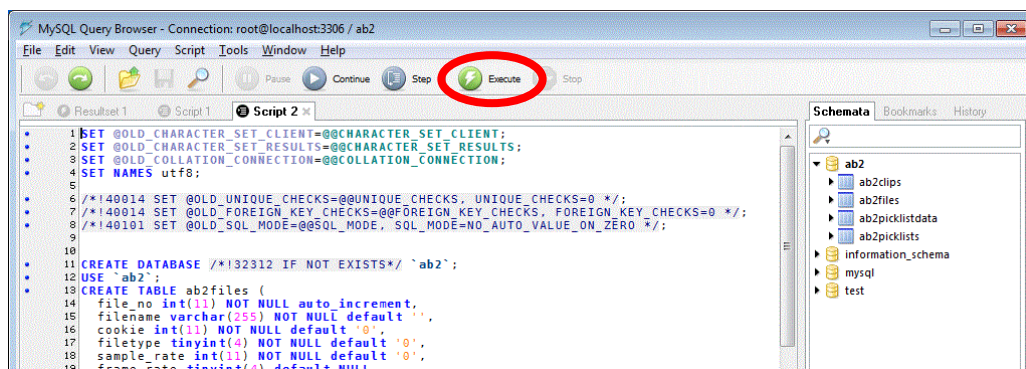
File > Open Script



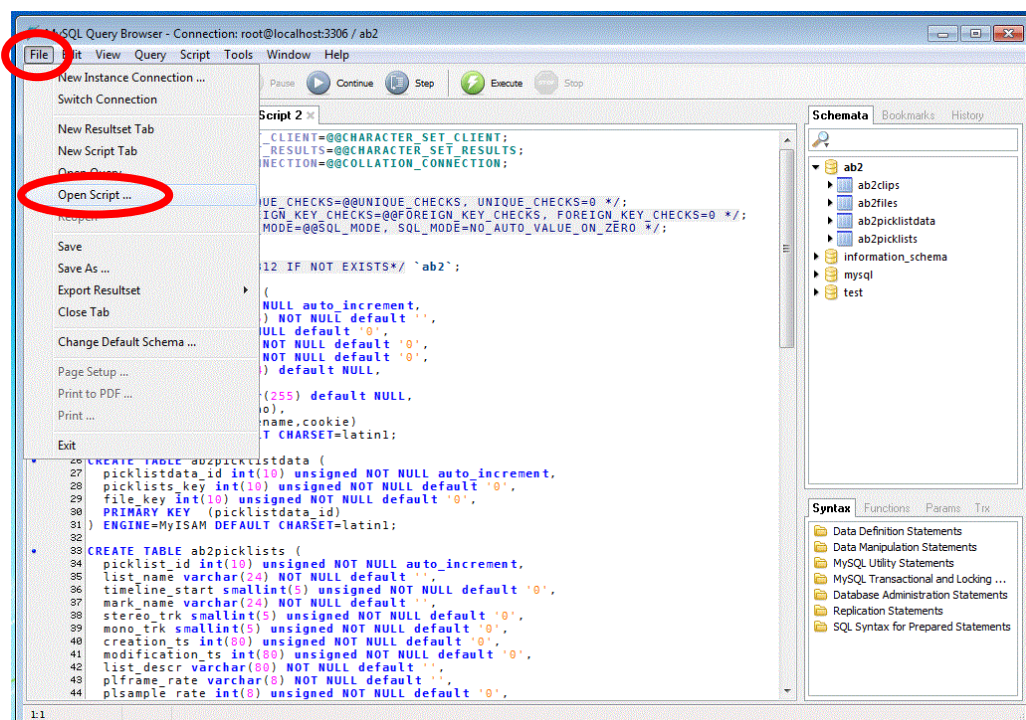
Select the AB3_MYSQL.sql file found in the \My Documents\AudioBase3 SQL folder,
And click "Open"



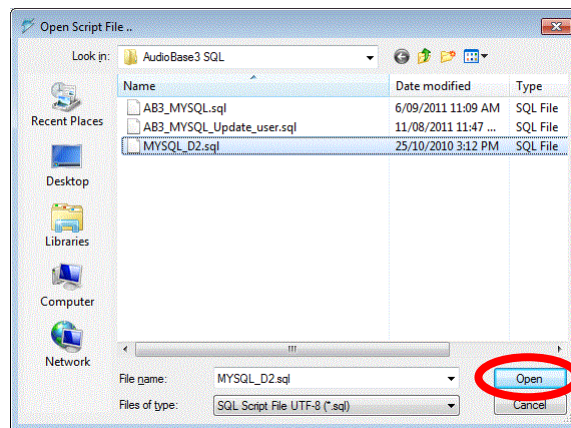
Click "Execute"



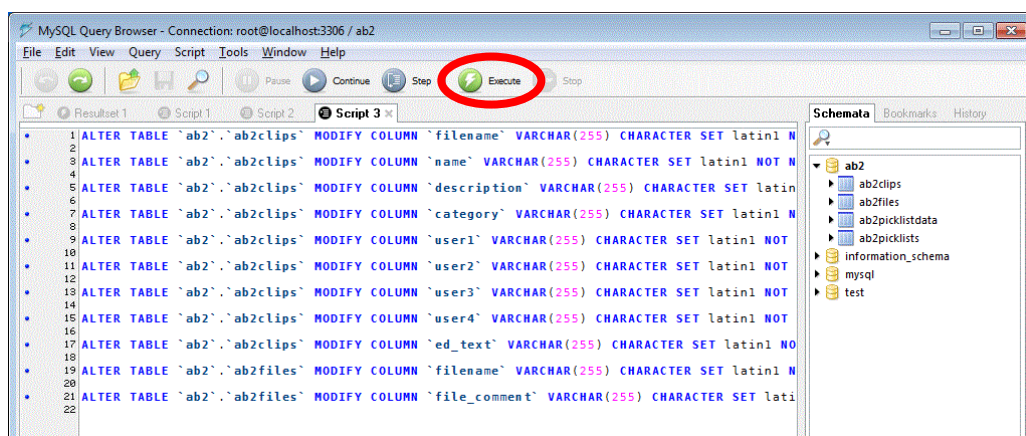
File > Open Script



Select the MYSQL_D2.sql file found in the \My Documents\AudioBase3 SQL folder,
And click "Open"



Click "Execute"



Close Command Line Client.

Launch Internet Explorer, and enter the address

http://localhost/audiobase

You should be greeted with the Audiobase Search page!



Configuring DREAM II/Xynergi

Audiobase drive mapping

Each Fairlight editing system will need the AudioBase3 Media Harddrive to be mapped as generic UNC volume.

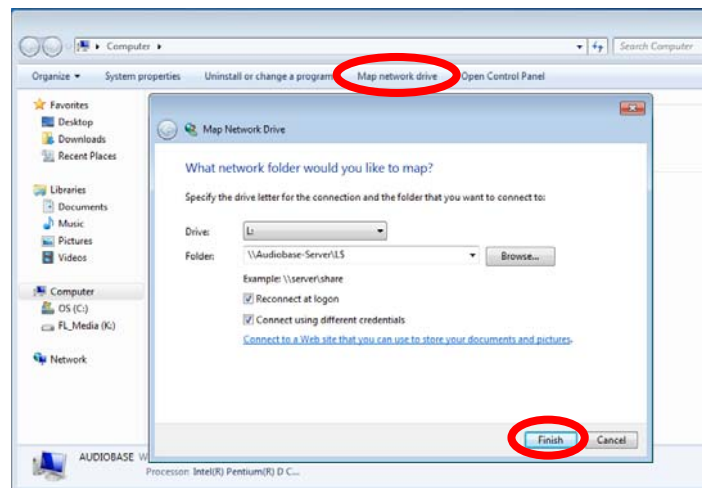
Launch "My Computer" or Windows Explorer, select "Computer" at left, and click "Map Network Drive".

Select a drive letter for the mapped drive.

Enter the generic UNC path for the drive under 'Folder', eg - \\Audiobase-Server\L\$ for drive L on the remote server named Audiobase-Server. Make sure to use the Computer Name – not the IP address!

Check 'Reconnect at login'.

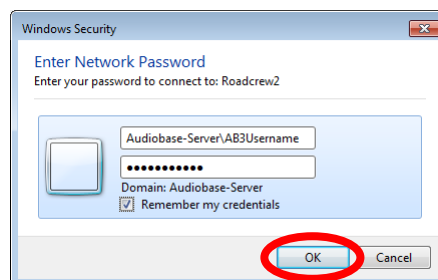
Check 'Connect with different credentials'



Enter a username (eg – 'Audiobase-Server\AB3Username', following the format 'computername\username') and password for an authorized user on the server.

Check 'Remember my credentials'.

Click 'OK'



Preparing the Audiobase drive for first use

To prepare the mapped drive for use with DREAM II,

- Launch Dream/Xynergi
- select **Setup > Media and Project Management**.
- Select the Mapped Audiobase harddrive from the devices list, and click on **Convert to Media device**.
- Please also set the **Device Info** accordingly

(in most cases, this is set automatically and does not need to be changed).

If your library drives contain many subfolders, click the "Find Subfolders" button in **Setup > Media and Project Management**.

Locate the topmost folder in the library folder tree, and click OK.

All subfolders will now be scanned.

Configuring the DreamII/Xynergi Audiobase settings

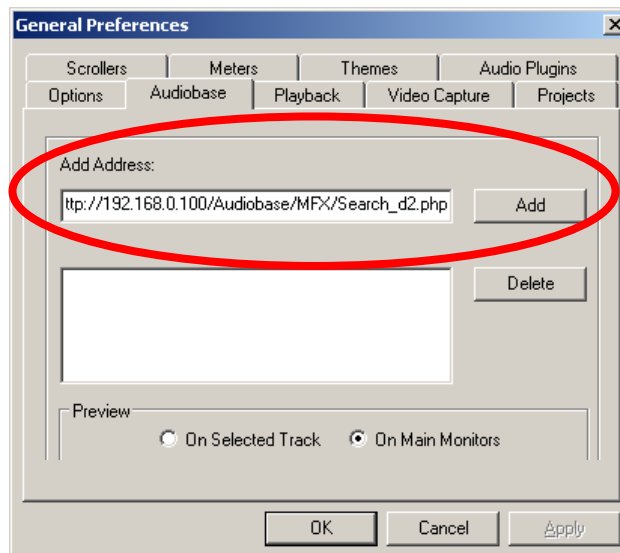
Set up your AudioBase3 Server in Setup → General Preferences → Audiobase

For Dream II/Xynergi systems V3.2 and earlier

Example: http://192.168.1.100/AudioBase/MFX/Search_d2.php

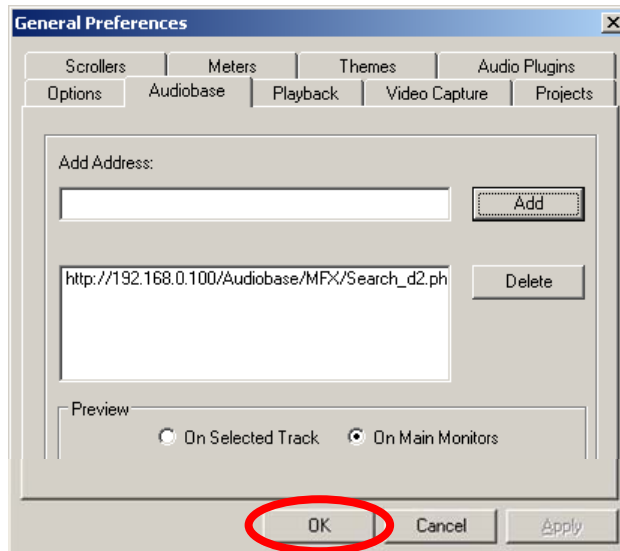
(Where 192.168.2.100 is the IP Address of your AudioBase3 Server)

- Enter the path in the “Add Address” field
- Click “Add”



Select the required Preview mode.

Click “OK” to accept the configuration.



Restart DreamII/Xynergi, and your Audiobase search functions should now be functional! ☺

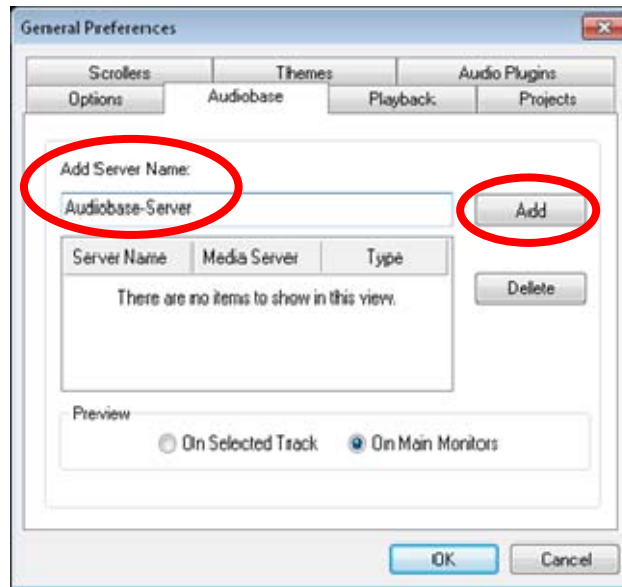
For Dream II/Xynergi systems V4.0 and beyond

Enter the name of the Audiobase machine in the "Add Server Name" field

Example: Audiobase-Server

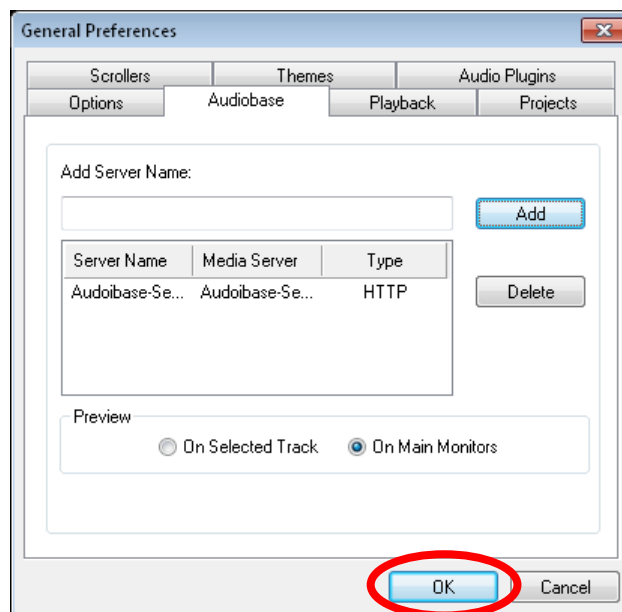
(Where "Audiobase-Server" is the Computer Name of your AudioBase3 machine)

Click "Add"



Select the required Preview mode.

Click "OK" to accept the configuration.



Restart DreamII/Xynergi, and your Audiobase search functions should now be functional!

Accessing the AudioBase3 Web Interface

To access AB3 from a “remote” networked PC

- Launch Internet Explorer
- Enter <http://X.X.X.X/audiobase/> into the address bar
(where X.X.X.X = the IP address being that of the AudioBase Server)



Testing/Troubleshooting

Initial troubleshooting steps

1) On the Audiobase server, open your favourite browser, and enter the following address

<http://localhost>

You should see an Apache webserver response page.

(If NO, check

- that Apache is installed,
- and the Apache service is running).

2) Add "audiobase" to the test address

<http://localhost/audiobase>

You should see the AudioBase3 search page.

(If NO, check

- that Audiobase is installed,
- if required, that ZEND has been installed, see Step 5 above,
- and that the relevant configuration scripts have been run).

3) Place a few WAV files in your AudioBase3 'WAV1' and 'WAV2' folders. Use the AudioBase3 web interface to scan the files into AudioBase3. After scanning, you should be able to search for the files and play the scanned clips.

4) On a networked machine or Xynergi editing system capable of seeing the Audiobase server, open your favourite browser, and point it to the IP address of the Audiobase server.

EG: if the Audiobase server IP address is 192.168.3.1, then type

<http://192.168.3.1>

You should see an Apache webserver response page.

(If NO, check

- that the Apache service is running on the Audiobase server,
 - and that there are no Firewall, Security, or Permissions issues in effect
- HINT! Set "Incoming Rule" to allow access to Port 80).

5) Add "audiobase" to the test address

EG: if the Audiobase server IP address is 192.168.3.1, then type

<http://192.168.3.1/audiobase>

You should see the AudioBase3 search page. You should be able to search for the files and play the scanned clips.

6) On the Xynergi editing system, confirm that the Audiobase Media drive has been mapped using UNC paths.

EG if the Audiobase server PC name is "Audiobase-Server",
and the physical drive letter for the Media drive is "L",

Then the correct UNC path should be

[\\Audiobase-Server\\L\\$](\\Audiobase-Server\\L$)

Confirm that this mapping is active and connected

7) Launch the Xynergi software, and confirm that the Audiobase Media drive is visible within Media and Project Management.

Confirm that the Audiobase Media drive is set as a "Dream II" device, and is set as either "Audio" or "Both".

8) On the Xynergi editing system, navigate to

Setup > General Preferences > Audiobase

And confirm that the path to the Audiobase server search is correct.

Common Problems:

Audiobase Server:

1) *I can't connect to the database!*

- The FairlightAU user and password may not be set up correctly. Try connecting to your database locally using the MySQL query tool and the FairlightAU username and password.
- If this does not work, try the root/sa username and password.
- If this does not work, is your database running?

2) *iTunes Publish is not working!*

- Have you set the correct path to the iTunes XML file in config.php?
- Have you set up iTunes COM in Component Services?

3) *ML4 Publish isn't working!*

- Does the webserver user account have write permissions to the ML4 folder?
- Have you refreshed the ML4 folder?

4) *Apache2 won't start!*

- Is IIS installed and running
(check Control Panels->Administrative Tools->Internet Information Services)?
If so, stop IIS.
- Are other webserver or VOIP programs (eg – Skype) installed?

Editing Suite:

1) *I can search from Dream II, but I can't preview or paste files!*

- Have you mapped your server drive(s) and set them as media devices, as described in "Configuring Dream II"?
- Have you selected "Find Subfolders", as described in "Configuring Dream II"?

Technical Assistance

- 1) PHP error messages are enabled in AudioBase3. If you encounter an error when using the web interface, please copy the request URI (from the url bar) and the error message(s) and email them to support@fairlightau.com.
- 2) If you are experiencing intermittent errors with Dream II, you may have found a bug. Please zip your debug logs and email them to support@fairlightau.com.

FairlightAU Sept
2012